

Fig 1. Meal Period Length

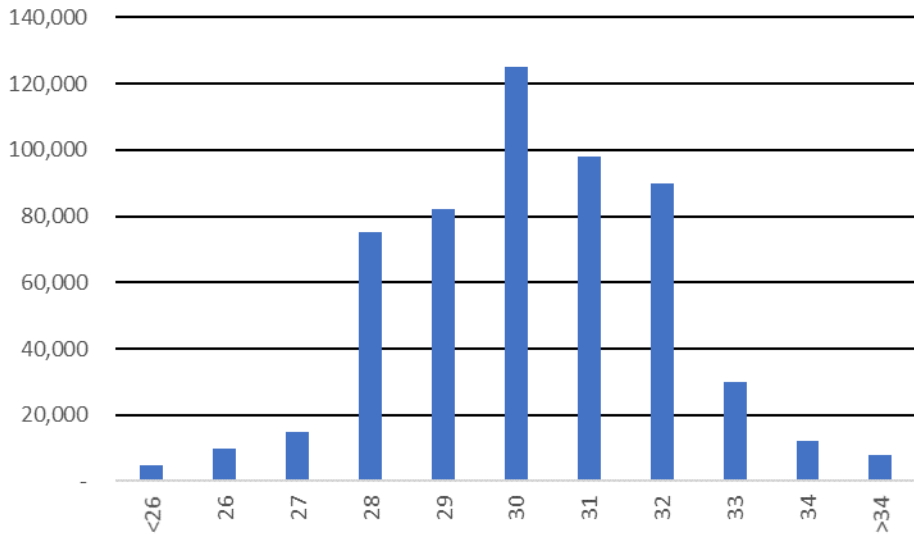


Fig 2. Meal Period Length
(In Thousands of Meals)

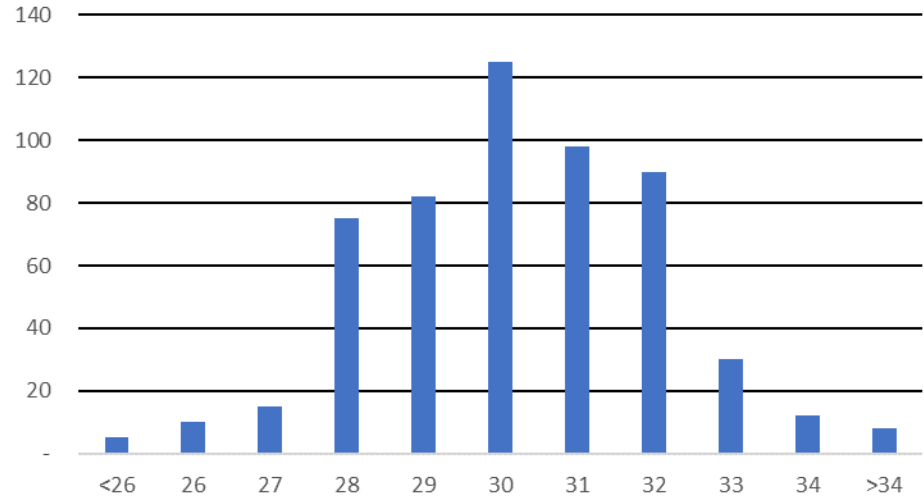


Fig 3. Meal Period Length
(In Thousands of Meals)

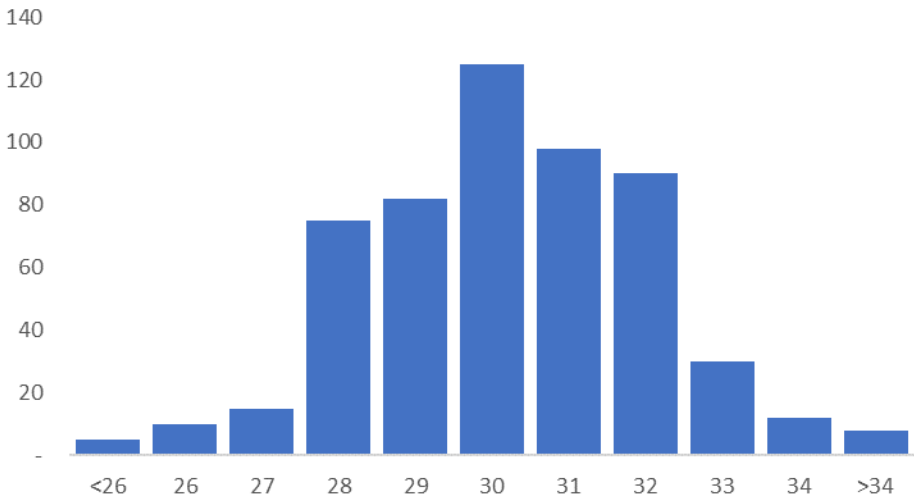
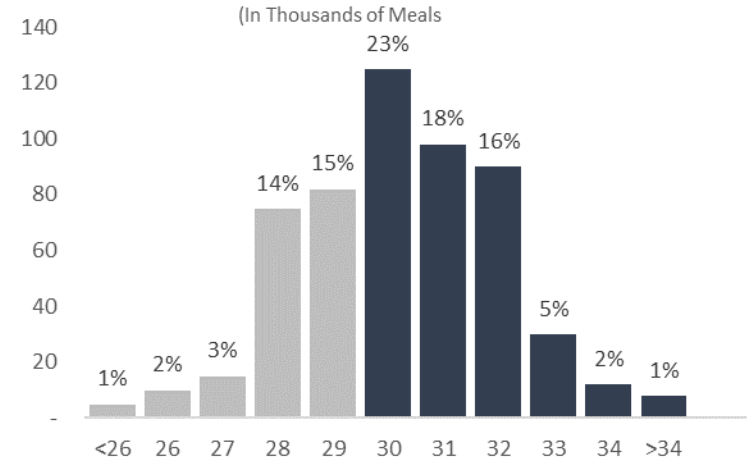


Fig 4. Clocking Behavior Suggests that Employees' Meals were as Likely to be Short as They were to be Long.



Blue indicates that the meal was the proper length (i.e., Greater than or equal to 30 minutes.)