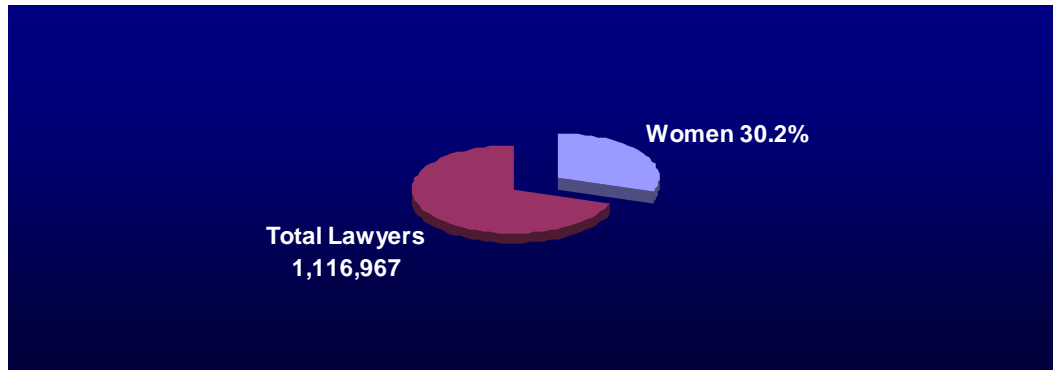


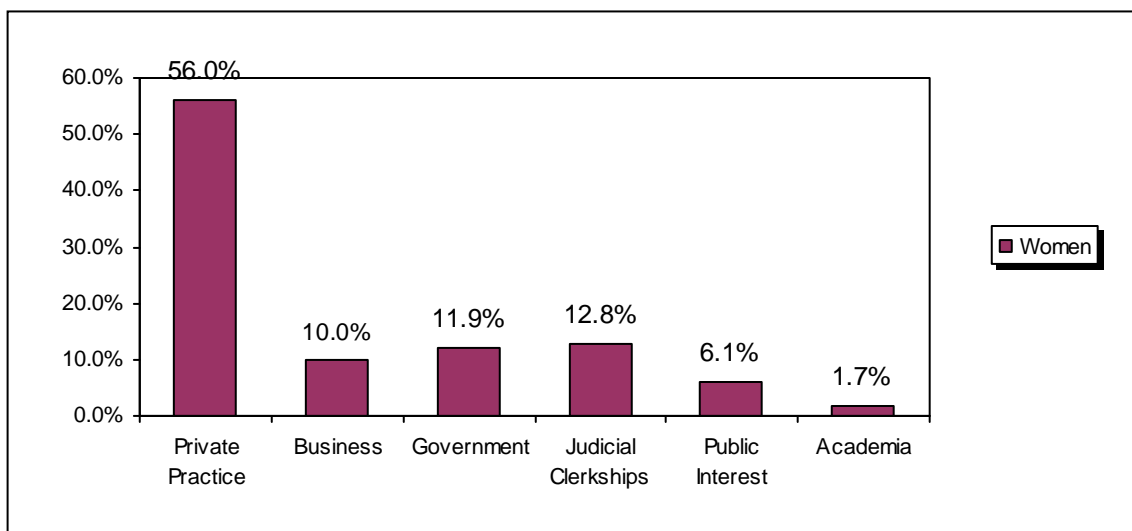
A Current Glance at Women in the Law 2006

Women in the Legal Profession



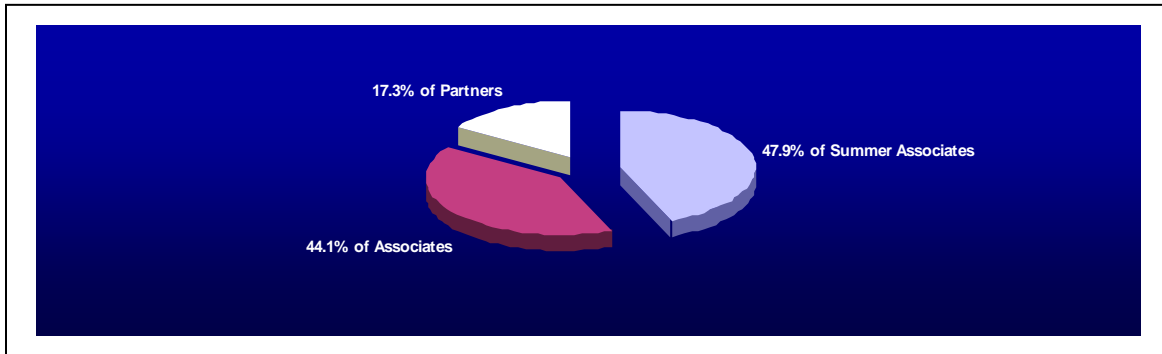
¹ National Lawyer Population by State 2006. American Bar Association Marketing Research Department.
² Bureau of Labor Statistics, "Employed persons by detailed occupation, sex, race, and Hispanic or Latino ethnicity" 2005. <http://www.bls.gov/cps/cpsaat11.pdf>

Practice Settings



Jobs & JD's: Employment and Salaries of New Law Graduates-Class of 2004. National Association of Law Placement.

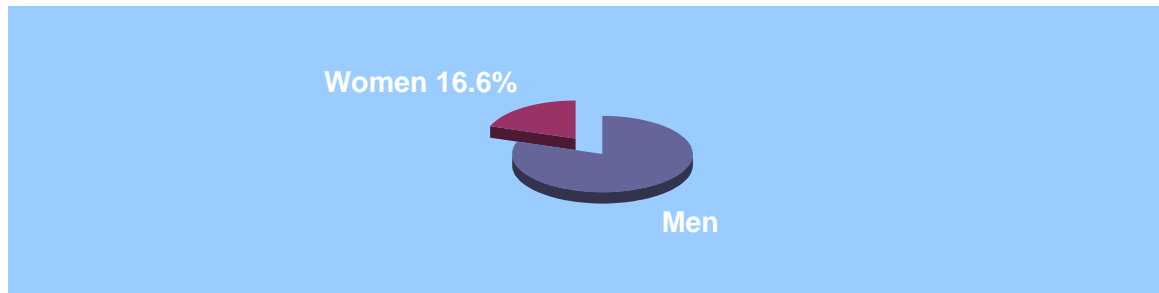
Women in Private Practice



Women and Attorneys of Color at Law Firms - 2005. National Association for Law Placement, November 2005. <http://www.nalp.org/press/details.php?id=57>

Women in Corporations

Fortune 500 General Counsel

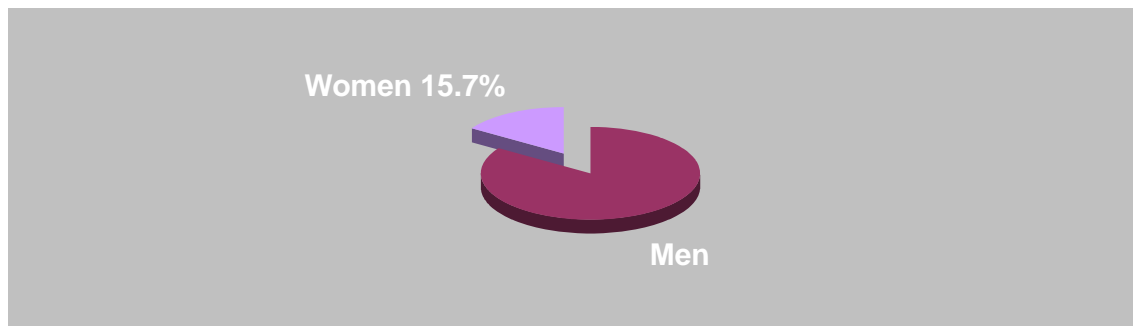


Caucasian	African American	Hispanic	Asian American/ Pacific Islander
15%	1%	.2%	0%

MCCA 2006 Fortune 500 General Counsel Survey, as of May 2006.

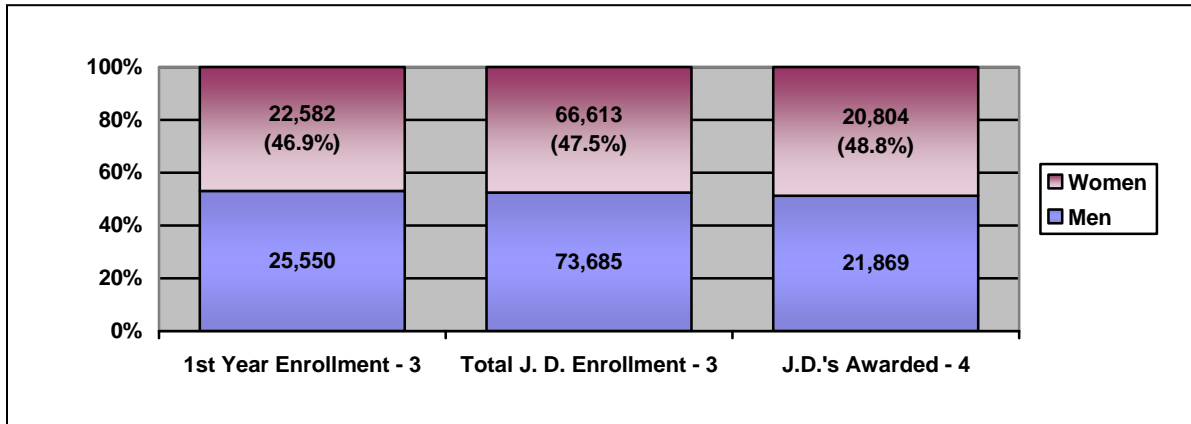
* MCCA was unable to confirm the race of 2 women

Fortune 1000 General Counsel



MCCA 2006 Fortune 1000 General Counsel Survey, as of May 2006.

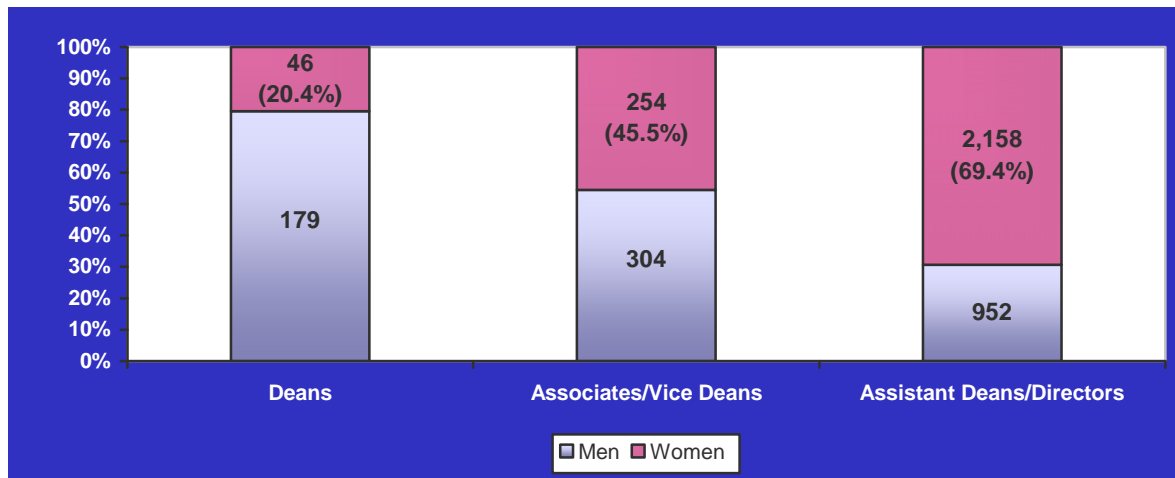
Women in Law Schools



³ *Legal Education Statistics Enrollment 2005-2006*. American Bar Association Section of Legal Education and Admissions to the Bar. <http://www.abanet.org/legaled/statistics/charts/stats%20-%206.pdf>

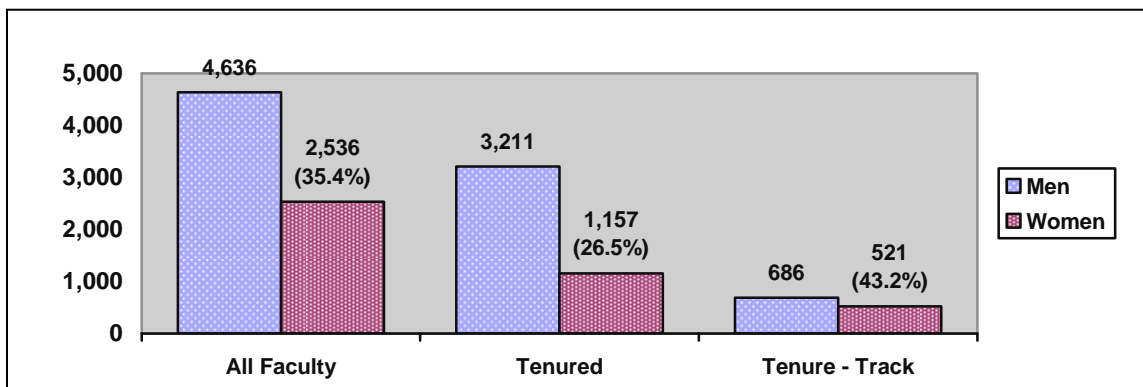
⁴ *Legal Education Statistics Enrollment 2004-2005*. American Bar Association Section of Legal Education and Admissions to the Bar. <http://www.abanet.org/legaled/statistics/charts/jdandllbdegrees.pdf>

Law School Administration



Law School Staff by Gender and ethnicity 2002-2005. American Bar Association Section of Legal Education and Admissions to the Bar.

<http://www.abanet.org/legaled/statistics/charts/facultyinformationbygender.pdf>



Law School Staff by Gender and ethnicity 2002-2005. American Bar Association Section of Legal Education and Admissions to the Bar.

<http://www.abanet.org/legaled/statistics/charts/facultyinformationbygender.pdf>

Women in the Judiciary

<u>Type of Court</u>	<u>Total # of Seats</u>	<u>Women</u>	<u>% Women</u>
District Court Judges ⁵	682 current seats – 32 vacancies	159	23.3%
Circuit Courts (Court of Appeals) ⁵	178 current seats - 16 vacancies	42	23.6%
International Trade ⁵	9 current seats	3	33.3%
United States Supreme Court	9	1	11.1%
State Courts of Last Resort ⁶	349	102	29.2%
Female Chief Justice ⁶	53	17	32.1%

⁵Alliance for Justice Judicial Selection Database: Demographic Overview of the Federal Judiciary, as of 6/2/2006.

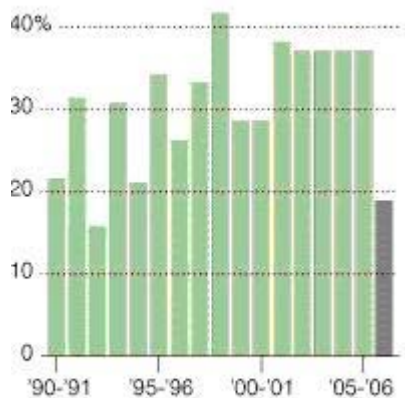
http://www.afj.org/judicial/judicial_selection_resources/selection_database/byCourtRaceGender.asp

⁶Judicial Selection and Retention Membership on State Courts of Last Resort, by Sex. September, 2006. National Center for State Courts. http://www.ncsconline.org/WC/Publications/KIS_JudSelCOLRsex.pdf.

Note: The state courts of last resort include the Oklahoma Court of Criminal Appeals and the Texas Court of Criminal Appeals.

U.S. Supreme Court Law Clerks

Percentages of Female Clerks Since 1990



Source: Supreme Court

Source: Supreme Court, as reported in *Women Suddenly Scarce Among Justices' Clerks*. Linda Greenhouse. August 30, 2006. *New York Times*

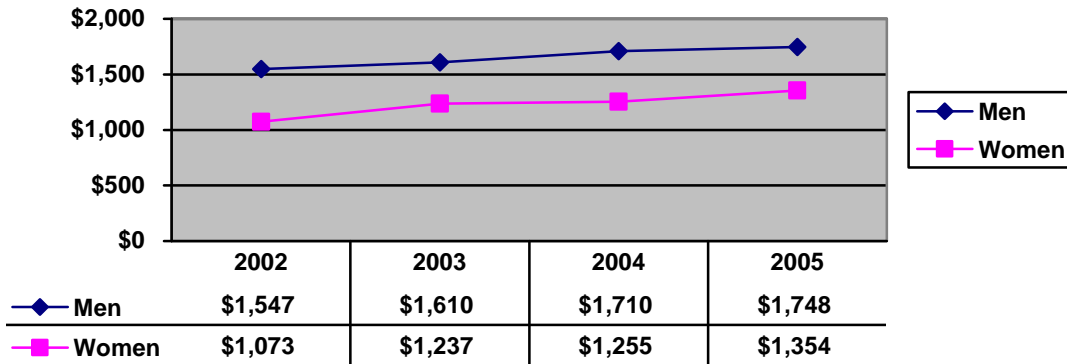
The Justices and Percentages of Female Clerks Since 2000

Breyer	Ginsburg	O'Connor	Stevens	Thomas	Souter
54%	46%	46%	44%	39%	36%

Rehnquist	Roberts	Alito	Kennedy	Scalia	
28%	22%	13%	11%	7%	

Women Suddenly Scarce Among Justices' Clerks. Linda Greenhouse. August 30, 2006. *New York Times*

Weekly Salary Men vs. Women Lawyers



Women lawyers' weekly salary as a percentage of male lawyers' salary:

69.4% | 76.8% | 73.4% | 77.5%

Bureau of Labor Statistics, "Median weekly earnings of full-time wage and salary workers by selected characteristics," <http://www.bls.gov/cps/cpsaat39.pdf> for 2005 and previous years

Women in the ABA

	<u>Total</u>	<u>Women</u>	<u>% Women</u>
Membership	382,948	114,244	29.8%
Board of Governors	37	10	27%
Section/Division Chairs	28	8	28.6%
Committee Chairs	75	22	29.3%

American Bar Association Marketing and Membership (as of May 2006)

Women presidents of the ABA:

- Roberta Cooper Ramo (1995 - 1996)
- Martha W. Barnett (2000 - 2001)
- Karen J. Mathis (2006-2007)

Women chairs of the House of Delegates:

- Martha W. Barnett (1994 -1996)
- Karen J. Mathis (2000 - 2002)
- Laurel G. Bellows (2006-2007)

First woman member of the ABA:

- Mary Florence Lathrop; Denver, CO (1918)

For more details, see the ABA Commission on Women's Goal IX Report at http://www.abanet.org/women/goal_nine_report.pdf.